

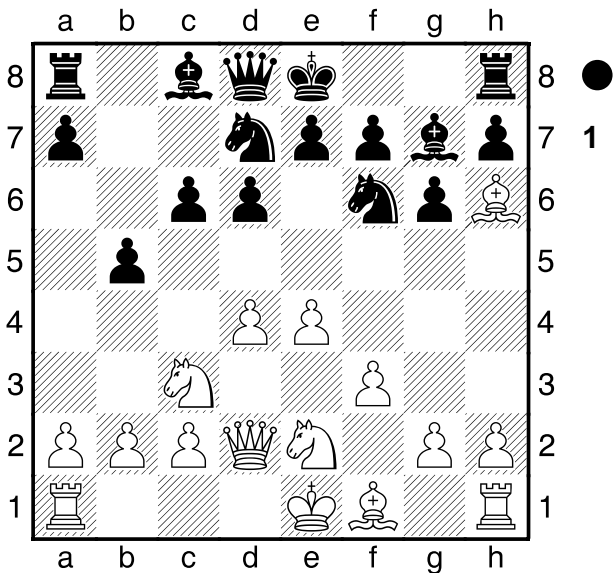
Kasparov, Gary B07
 Topalov, Veselin 2812
 Hoogovens Wijk aan Zee (4) 2700
 [Moreno Ruiz, J] 20.01.1999

1.e4 d6 2.d4 ♘f6 3.♗c3 g6 The Pirc defense, has raised the black, risky, as the style of the Bulgarian GM, yields the center and the initiative to the white. **4.♗e3 ♗g7 5.♖d2** The target poses a typical attack scheme against a fianchetto: Change it with Bh6. **5...c6 6.f3 b5** Black tries to gain space on the queenside to counteract the central dominance of white, although this is a dubious strategy.

[6...0-0 This would be very risky for black, as it gives white a clear and direct plan of attack on the kingside.

7.♗h6 ♘bd7 8.h4! b5 9.h5!±]

7.♗ge2 White does not want to define long castling so soon, and makes a very useful move, without abandoning the possibility of short castling. **7...♗bd7** The black one pretends to carry a Nc4. **8.♗h6**



White fulfills a part of their strategy, which is to change the strong black bishop. **8...♗xh6**

[8...0-0 9.h4! It would yield a dangerous attack on the target, following with Ph5. This is a thematic plan in many positions to attack the short castling of the black.]

9.♖xh6 ♗b7 The blacks prepare the long castling, where the king will be safer. **10.a3** A useful waiting move.

[10.0-0-0 Black could continue with b4 with the idea of Qa5 and Nb6 posing some problems.]

10...e5 11.0-0-0 ♖e7 Preparing the long castling.

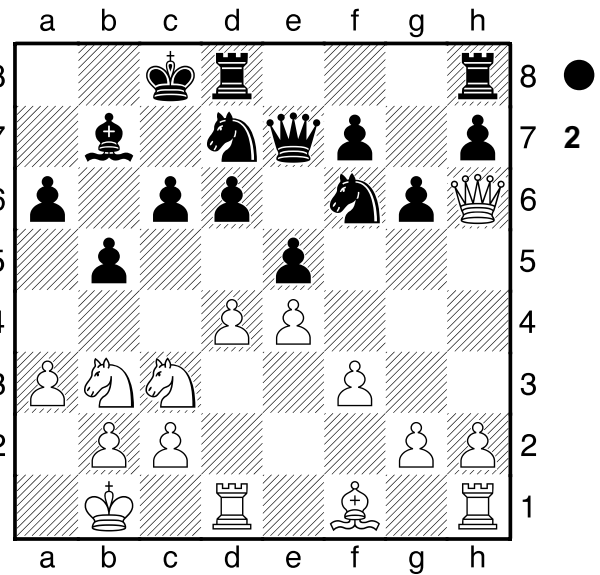
12.♗b1! The beginning of a great plan of Kasparov, dedicated to attack also the long castling! **12...a6**

13.♗c1 0-0-0 14.♗b3!

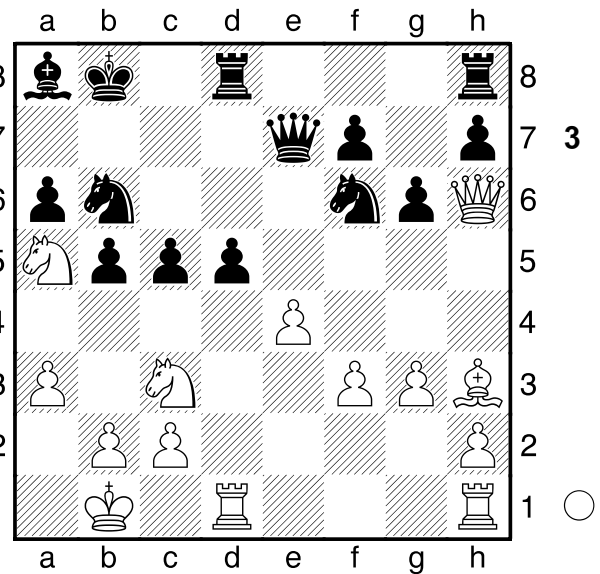
(Diagrama 2)

This was Rb1's idea! The knight joins in the attack with Ca5, and the king will be pursued on the queenside.

14...exd4 15.♗xd4 c5 16.♗d1 ♗b6 17.g3!



Incorporating the bishop into the attack! **17...♗b8 18.♗a5 ♗a8 19.♗h3 d5!?**



Topalov rejects a passive game and opens the centre, but now his exposed king gives the target a multitude of themes! **20.♖f4+ ♗a7 21.♗he1 d4!?** **22.♗d5!** Challenging the whole idea of black! A passive move by Kasparov would have given the black the initiative.

[22.♗a2?! ♗he8=]

22...♗bxd5 The game will be very difficult to follow if I do not go exposing the different tactical alternatives, therefore from here on we will have to accompany ourselves of analysis of variants to be able to enjoy, of the ingenuity and creative talent of the " Ogre of Baku ".

[22...♗xd5? 23.exd5 ♖d6 24.♗c6+ ♗a8 25.♗e7 With a winning position.]

[22...♗fxd5? 23.exd5 And the black queen has an overload problem since it has to protect, two points, the white queen's entrance by c7 and the f7 pawn.

♖d6 24.♖xf7+ With a winning position for white.]

23.exd5 ♖d6 24.♗xd4!! In reality today it is still difficult to evaluate perfectly if this move is completely correct but from an artistic point of view, humanly speaking, it is

undoubtedly great, especially when White had a balanced ending with 24.Nc6 at hand.

[24.♖c6+ It was the solid alternative. ♕xc6 25.♖xd6 ♖xd6 26.dxc6 ♖xc6 27.♞e7+ ♖b6 28.♖xf7 ♞e8=]

24...cxd4?

[24...♖xf4 25.♖xf4 ♖xd5 26.♖xf7+ ♖b6 27.♖b3 ♕c6 With a small white advantage]

[24...♕xd5!? It would be very interesting and complex.]

25.♞e7+!! An amazing sledgehammer. The rook can't be captured! **25...♖b6**

[25...♖xe7? 26.♖xd4+ ♖b8 27.♖b6+ ♕b7 28.♖c6+ ♖a8 29.♖a7#]

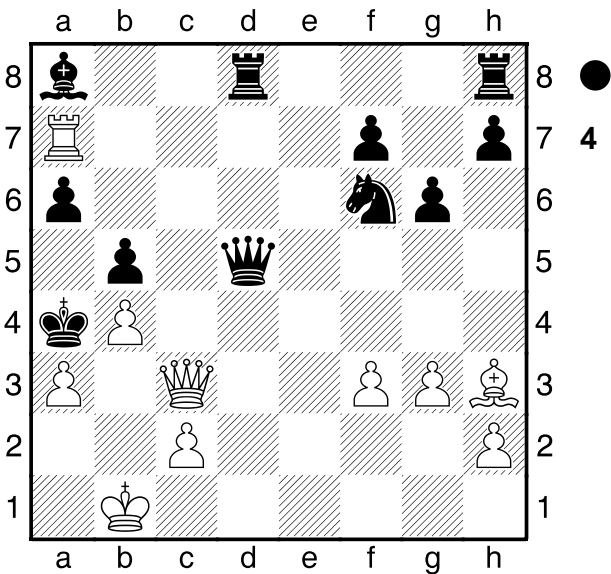
26.♖xd4+ ♖xa5 There is no choice but to undertake a risky run from the king.

[26...♖c5 27.♖xf6+ ♖d6 (27...♖xa5?? 28.b4+) 28.♖xf7

A) 28...♖xa5 29.♖c3+ b4 30.axb4+ ♖xb4 31.♖c7+ ♖b5 (31...♖a4 32.♖f4; 31...♖b6 32.b4+ ♖b5 33.♕f1+ winning) 32.♕f1+ ♖a4 33.♖f4 winning;

B) 28...♖xf6 29.♖xf6+ ♖c5 (29...♖xa5?? 30.b4+ ♖a4 31.♖xa6#) 30.♖b3+ ♖xd5 31.♖xa6 with white advantage]

27.b4+ ♖a4 28.♖c3 threatening Qb3 mate. **28...♖xd5 29.♖a7!**



♕b7 Only move, since a

[29...♖d6 30.♖b2 Threatening Qb3 ♖d4 31.♖xd4 ♖xd4 32.♖xa6#]

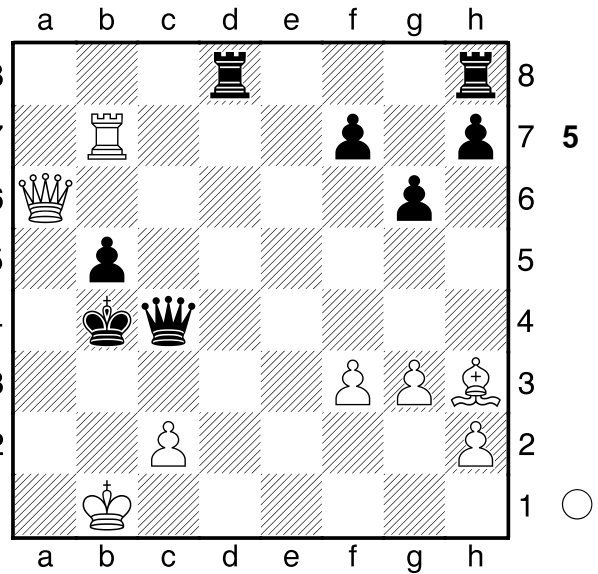
30.♖xb7 ♖c4?!

[30...♞he8!? 31.♖b6 ♖a8 32.♖xf6 With a small white advantage. ♖c4 33.♖xc4 bxc4 34.♖b2 ♞e7 35.♖c6 ♖b5 36.♖c5+ ♖b6 37.♖xc4±]

31.♖xf6 ♖xa3 All this seems to be a flight forward, there were no alternatives as White threatened the a6 pawn.

[31...♖d1+ 32.♖b2 ♖d4+ (32...♖a8 33.♖b6 ♖d4+ 34.♖xd4 ♖xd4 35.♖xf7 a5 36.♕e6 axb4 37.♕b3+ ♖a5 38.axb4+ ♖b6 It was not possible to capture the pawn because of c3. 39.♖xh7 With a winnig endgame) 33.♖xd4 ♖xd4 34.♖xf7 ♖d6 35.♞e7 ♖a8 36.♕e6 With a winning position]

32.♖xa6+ ♖xb4



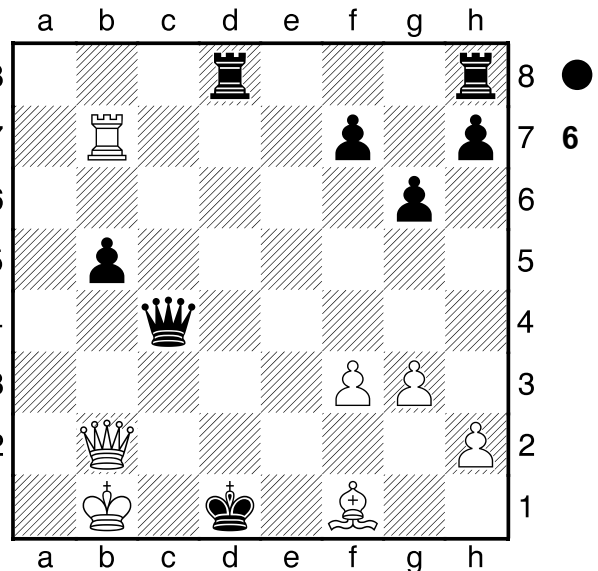
It looks like the king's brave and risky escape is going to succeed, but... **33.c3+! ♖xc3 34.♖a1+! ♖d2** also only move

[34...♖b4 35.♖b2+ ♖b3 (35...♖c5 36.♖c7+; 35...♖a5 36.♖a3+ ♖a4 37.♖a7+ ♖b6 38.♖xa4; 35...♖a4 36.♖a7#) 36.♖xb5+]

35.♖b2+ ♖d1 Critical moment! Black seems to have had his way, and now the black king is collaborating in the attack. Even the white king is threatened by Qd3+! but there is an unexpected resource that confirms all the white game so far.

[35...♖e3 36.♞e7+ ♖xf3 37.♖g2#]

36.♕f1!!



It is curious that after carrying the king all over the board the key to the rook delivery combination on d4 of the move 24, is right here twelve moves ahead, and without which none of the above could have been done.

36...♖d2 The best defense

[36...♖xf1 37.♖c2+ ♖e1 38.♞e7+ ♖e2 39.♖xe2#]

37.♖d7! A deadly pin!! Absolute elegance in this move!
37...♖xd7 38.♕xc4 bxc4 39.♖xh8! An elegant and

necessary detail. Black still has some desperate resistance. **39...♞d3 40.♞a8 c3 41.♞a4+ ♕e1 42.f4 f5 43.♕c1 ♞d2 44.♞a7!** Another elegant long move by the queen. Black now loses more pawns, so Topalov abandons. A REAL WORK OF ART!

According to a vote in a major magazine, the best game of the 20th century.

[44.♞a7 h5 (44...♞xh2? 45.♞g1+-) 45.♞b6 h4 46.♞xg6+-]

1-0