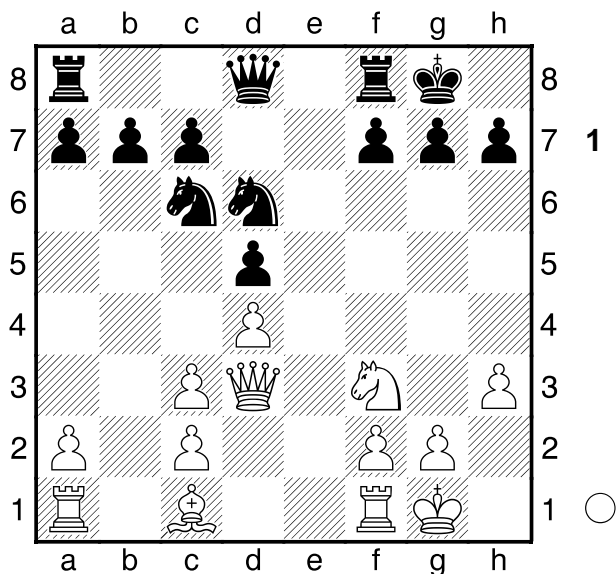


C01

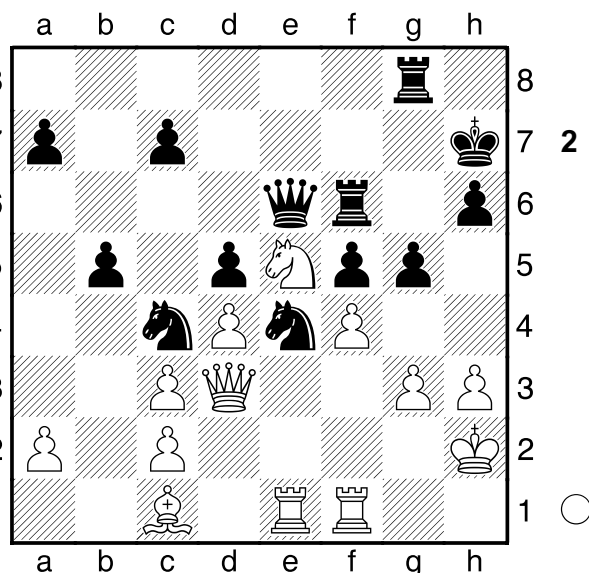
□ Mannheim, N
 ■ Nimzowitsch, Aaron
 Frankfurt 1930
 [MI Javier Moreno Ruiz]

One of the great examples of Nimzowitsch's blockade, and it shows to perfection the French idea of blockade in the white squares, something closely linked to a "bad bishop", i.e. locked up by his own pawns. THEME: MASTERY OF THE SINGLE-COLOURED SQUARES 1.e4 e6 2.d4 d5 3.♖c3 ♗b4 4.exd5 exd5 5.♗d3 ♘e7 6.♘f3 ♘bc6 7.h3 ♗f5! The change of white bishops is part of the black plan. 8.♗xf5?! ♘xf5 9.0-0 ♗xc3 10.bxc3 ♖0-0 11.♗d3 ♘d6



Black will do an impressive job of blocking through the white squares. Note that both e4 and c4 are weakened by poor pawn structure, with bent pawns, which is always damage that would need to be compensated. 12.♘g5 g6 13.♗f4 ♗f6!

- [13...♘c4? 14.♗g3 ♖c8 15.♗h4± (Reinfeld)]
- 14.♗d2? Big mistake! It was necessary to drop the bad bishop from the target.
- [14.♗xd6!? ♗xd6]
- 14...h6 15.♘f3 ♘h7 16.♘h2 ♗h8!
- [16...♗g7 17.♘g4 h5 18.♗h6+-]
- 17.♗e3 ♗g7! 18.♗f3
- [18.♘g4 f5! 19.♗xh6+? (19.♘xh6? ♘c4)
- 19...♗xh6 20.♘xh6 (20.♗xh6 ♖h8) 20...♘e4
- 21.♗c1 g5 22.f3 ♘g3 23.♗xg5 ♘xf1 24.♘xf1 ♖g6
- 25.h4 ♖h8
- 18...♘e4 19.♗c1 f5 20.♗d3 ♘a5 21.f4?! This move locks up even more the bishop himself.
- [21.♗b5 b6 22.♗xd5 ♘xc3
- 21...♗d7 22.♘f3 ♗c6 23.♘e5 ♗e6! Wisely rejecting a material gain that would free White.
- [23...♗xc3? 24.♗xc3 ♘xc3 25.♗d2 ♘e2+ 26.♘f2+-]
- 24.♖b1 b6 25.♘h2 ♘c4 26.♗e3
- [26.♘xc4 dxc4 27.♗e3 ♗d5]
- 26...g5! 27.g3 ♖f6 28.♖be1 ♖g8 29.♗c1 b5! ♖



The blockade situation of the black horses is impressive. Absolute triumph of the black strategy. The Ac1 is almost a piece less, and the holes in e4 and c4 have been occupied by the strong black knights. 30.♘f3? Facilita la ruptura en el Flanco de rey. 30...g4 31.hxg4 ♖xg4 32.♘g1 ♖fg6 [32...♖xg3? You can never lose sight of the tactics! This would throw away the whole of the previous black game. 33.♖xe4!+-] 33.♖f3 ♗g8 34.♘e2 h5 35.♗g2 h4 36.♖h1 ♖h6 37.♖h3 The Whites have averted disaster against their king, but there is a surprise in store for them. 37...♗g6! 38.♗e3 ♗a6!+- Another theme appears in this strategic genius: The second front White has avoided disaster on the king's wing by putting all her pieces passive, but then the queen's flank is left to her own devices. 39.♗f2 [39.♘c1 hxg3 40.♖xh6+ ♗xh6+- (Coles)] 39...♗xa2 40.♗e1 a5! The past pawn is too much for White, who cannot defend both flanks at the same time. 41.♘f1 ♗b1 42.♘g1 a4 43.♘e2 a3 44.♖f1 a2 Madrid in August 2020. jmorenoruiz70@gmail.com 0-1