

□ Flohr,Salo
 ■ Euwe,Max

Amsterdam/Karlsbad m (1)
 [MI Javier Moreno Ruiz]

D36

1932

The minority attack is a typical method that originates in Queen's Gambit positions after the cxd5 exd5 exchange. This is the famous Carlsbad structure.

In these positions white makes a quick plan of attack on the queen's wing with Pa4, Pb4, Pb5 after proper preparation, with the aim of creating a weak pawn for black on c6.

THEME: MINORITY ATTACK 1.d4 d5 2.c4 c6 3.♟f3 ♟f6 4.♟c3 e6 5.♟g5 ♟bd7 6.cxd5 exd5

Pawn structure that characterizes the Carlsbad variant.

7.e3 ♟e7 8.♟d3 0-0 9.♟c2 ♟e8 10.0-0 ♟f8

[10...c5 11.dxc5 ♟xc5 12.♟ad1]

11.♟e5 ♟g4 Natural response. 12.♟xe7 ♟xe7

13.♟xg4 ♟xg4 14.♟fe1 ♟ad8 15.♟e2 ♟d6!

Faced with the plan of the "MINORITY ATTACK" of white, black decides to carry out a typical procedure: Counterattack of pieces in the king's wing. 16.♟g3 ♟h6

17.♟f5! Just as he transferred the knight to defend the king's wing, he proceeded to remove the attacking piece.

17...♟g5 18.♟xg4 ♟xg4 19.h3 You have neutralised possible attacks; this move would be dangerous if the black queen's bishop was still there or if ...g7-g5-g4 could be carried out quickly. He will now execute his advance on the queen's flank. 19...♟d7

20.b4 ♟e6 21.♟ab1 ♟c7?! Playing passive. It was better to counterattack on the king's flank.

[21...♟g5 22.♟f5]

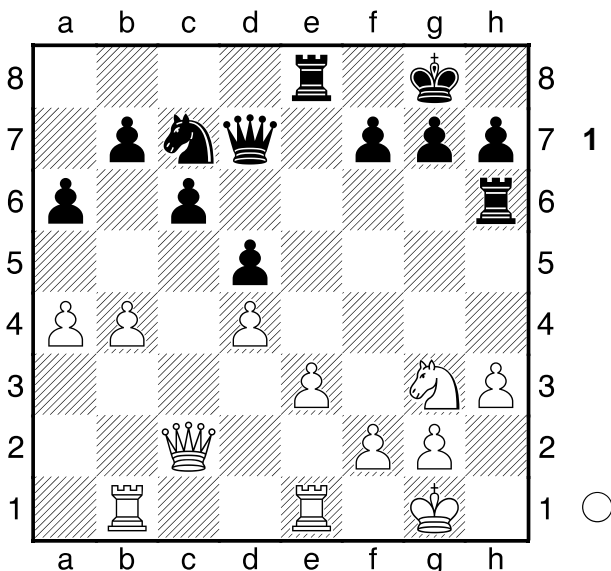
[21...g6 It was a lot more interesting.]

22.a4 a6

[21...♟g5 22.♟f5]

[21...g6 It was a lot more interesting.]

22.a4 a6



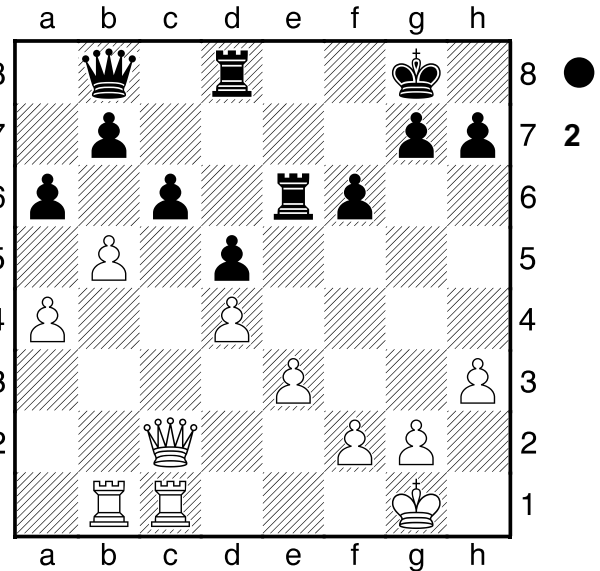
For the moment it prevents the advance b5; the black plan would be Ce8-Cd6-Cc4, complemented by ...b5, to block the attack definitively. 23.♟f1 ♟e7 24.♟h2!

Threat Cg4-Ce5 gaining time. 24...♟he6 In order to be able to play ...f6 without separating the rooks 25.♟f3 f6

26.♟d2 ♟e8 27.♟b3 ♟6e7 28.♟c5 THE IDEAL SQUARE OF A WHITE HORSE IN THE MINORITY.

Strong attack on the queen's wing, and touches important points. 28...♟c8 29.♟ec1 ♟d8 The white regrouped its pieces harmoniously, while Euwe has lost time. 30.♟d3 ♟b8 31.♟f4 ♟e6?! It facilitates the breakage, which could also be done by taking the knight to c3

THE CHANGE OF MINOR PIECES FACILITATES THE WHITE PLAN OF ATTACK OF MINORITIES. Black can hardly create counterplay on the king's flank. 32.♟xe6 ♟xe6 33.b5



Target achieved! The idea of the minority has been carried out well. 33...axb5 34.axb5± cxb5?

This is a mistake, since a single weakness (c6) is sustainable, but two (pawns d and b) make defence very difficult.

[34...♟c7 35.bxc6 bxc6 36.♟c5 ♟c8 37.♟b6± IDEAL MINORITY POSITION. We can press all the rest of the game. ♟d7]

35.♟xb5 b6 36.♟b3 ♟d6

[Neither did it serve 36...♟b7 37.♟cc5 ♟ed6 38.e4 ganando material.]

37.♟b1 ♟d7 38.♟xb6 ♟xb6 39.♟xb6 ♟xb6 40.♟xb6 THEMATIC MINORITY FINAL! Practice this ending.

40...♟f7 41.♟h2 ♟e7 42.♟g3 ♟a7 43.♟f4 g6

44.g4! ♟a2? New error that speeds up the outcome, but the end was lost, for example:

[44...h6 45.♟b8 ♟f7 46.♟h8 ♟a2 47.♟f3 ♟g7 48.♟d8 ♟a5 49.♟d7+ ♟g8 50.h4 g5 51.h5 winning]

45.♟b7+ ♟e6 46.♟g3 Black resigns in the face of the inevitable loss of a second pawn.

A classic game, where a strong Soviet master beats the future world champion, and to study carefully, and thus understand the queen's gambit.

Madrid, August 2020.

jmorenoruiz70@gmail.com

1-0