

□ Tarrasch,Siegbert
 ■ Alekhine,Alexander
 Bad Pistyan
 [MI Javier Moreno Ruiz]

E10

1922

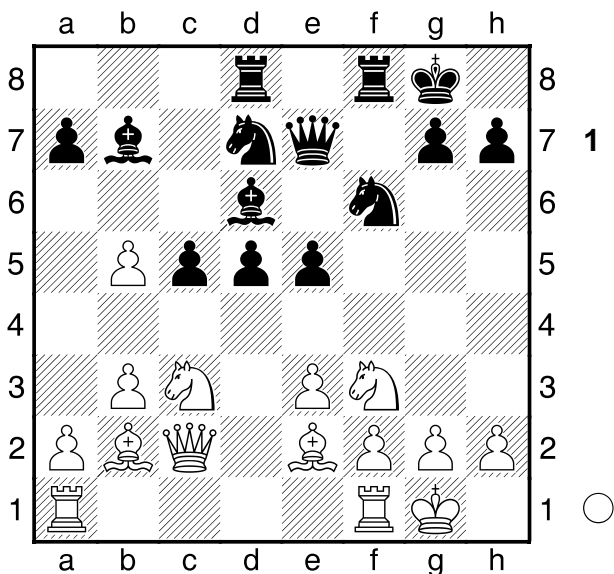
Alekhine with this game gives us a wonderful example of the strength of a classic, mobile and well protected centre, by means of a strong pawn sacrifice.

THEME: THE STRENGTH OF A CLASSIC CENTRE.

1.d4 ♘f6 2.c4 e6 3.♗f3 c5 4.d5 b5 An interesting gambit, which it might be better to reject. 5.dxe6

[5.♙g5!?]

5...fxe6 6.cxb5 d5 7.e3 ♙d6 8.♘c3 0-0 9.♙e2 ♙b7 10.b3 ♘bd7 11.♙b2 ♚e7 12.0-0 ♝ad8 13.♞c2 e5



The classic centre, with pawns in e5 and d5, in black is a strength, being well protected, and highly mobile. Mobility and good protection of the centre is the key issue when talking about whether a classic centre is a force. 14.♝fe1 e4! 15.♘d2 ♘e5 The black central domain, allows the transfer of forces to the king's wing. White is defenceless and passive.

[15...d4 16.♙c4+ ♗h8 17.exd4 cxd4 18.♘cxe4 ♗xe4 19.♗xe4]

16.♘d1 ♗fg4 17.♙xg4 ♘xg4 18.♗f1 ♞g5!

The black centre paralyses the white's attempts at counterplay! 19.h3 ♘h6 20.♗h1 ♗f5 21.♗h2 d4!

[21...♗h4? 22.♝g1±]

(Diagrama 2)

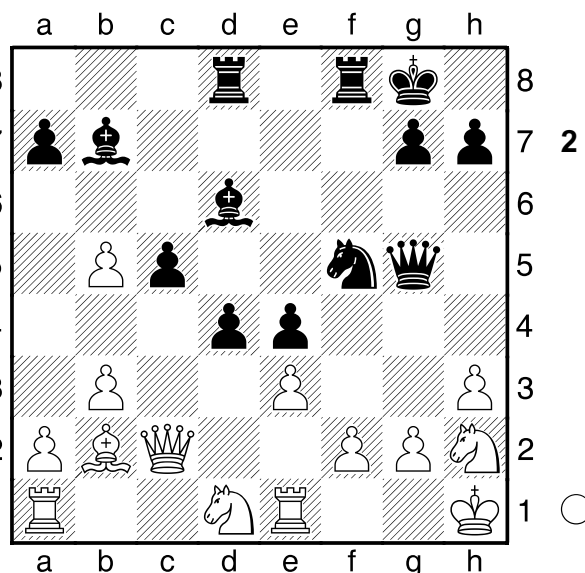
The exact moment to move forward! The tactic has to help.

The right moment to advance the pawns in a classic centre requires great attention, as this is where you can gain a winning advantage or lose it. Precise calculation is essential. 22.♙c1

[22.exd4 e3! 23.♗xe3 ♗xe3 24.fxe3 ♞g3 25.♗f1 ♝xf1+ 26.♝xf1 ♞h2#]

22...d3 23.♞c4+ ♗h8 24.♙b2 ♗g3+! 25.♗g1

[25.fxg3 ♞xg3-+]



25...♙d5 The white cannot touch pawns e4, and d3, thus being severely restricted.

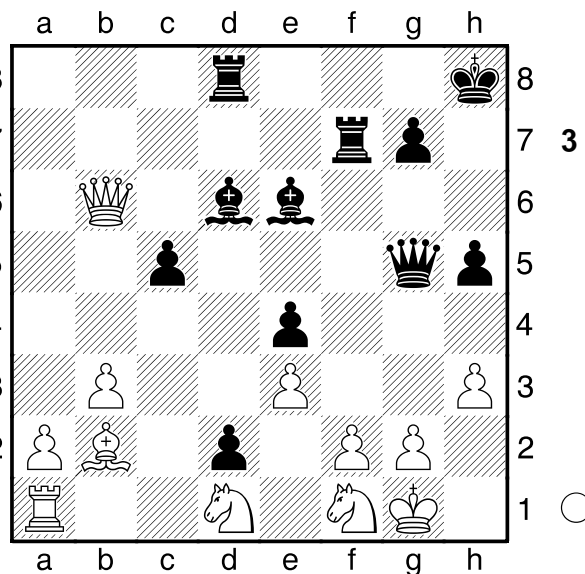
[25...♗e2+ 26.♝xe2 dxe2 27.♞xe2]

26.♞a4 ♘e2+ 27.♗h1 ♝f7 28.♞a6 h5 29.b6 ♗g3+!

30.♗g1

[30.fxg3 ♞xg3-+]

30...axb6 31.♞xb6 d2 32.♝f1 ♗xf1 33.♗xf1 ♙e6



34.♗h1 There was a mythical variant given by Alekhine in the comments to the game.

[34.♞c6 ♝f3 35.♞xe4 ♙d5 36.♞a4 ♞xg2+!!

37.♗xg2 ♝g3+ 38.♗h2 ♝g2+ 39.♗h1 ♝h2+

40.♗g1 ♝h1# Alekhine. A FAMOUS VERSION OF THE MILL'S MATE.]

34...♙xh3! 35.gxh3 ♝f3 36.♗g3 h4 37.♙f6 ♞xf6

38.♗xe4 ♝xh3+ 39.♗g1 ♙h2+ And at the Queen's

Madrid, August 2020

jmorenorui70@gmail.com

0-1